

**LEGEND**

- HISTORIC SURFACE WATER SAMPLE LOCATION
- SURFACE WATER SAMPLE LOCATION
- SURFACE WATER SAMPLE LOCATION SINGLE EVENT
- STORM SEWER
- STREAM
- HORSHAM AIR GUARD (HAGS)
- FORMER NAS JRB WILLOW GROVE

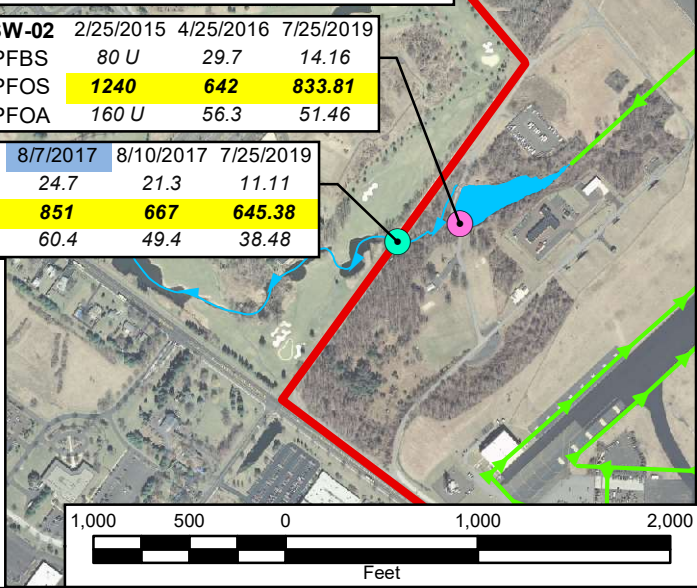
**NOTES:**  
ALL RESULTS REPORTED IN PARTS PER TRILLION (PPT)

PFBS - PERFLUOROBUTANESULFONIC ACID  
PFOS - PERFLUOROOCTANESULFONIC ACID  
PFOA - PERFLUOROOCANOIC ACID  
"J" = ESTIMATED VALUE  
"J-" = LOW ESTIMATED VALUE  
"U" = BELOW DETECTION LIMITS

**Bold** INDICATES EXCEEDS HUMAN HEALTH PROJECT SCREENING LEVEL:  
PFBS: 1,400,000 PPT  
PFOS: 1,400 PPT  
PFOA: 1,400 PPT

**Bold** INDICATES EXCEEDS ECOLOGICAL PROJECT SCREENING LEVEL:  
PFBS: 170,000,000 PPT  
PFOS: 2.6 PPT  
PFOA: 2,900,000 PPT

8/7/2017 STORM EVENT



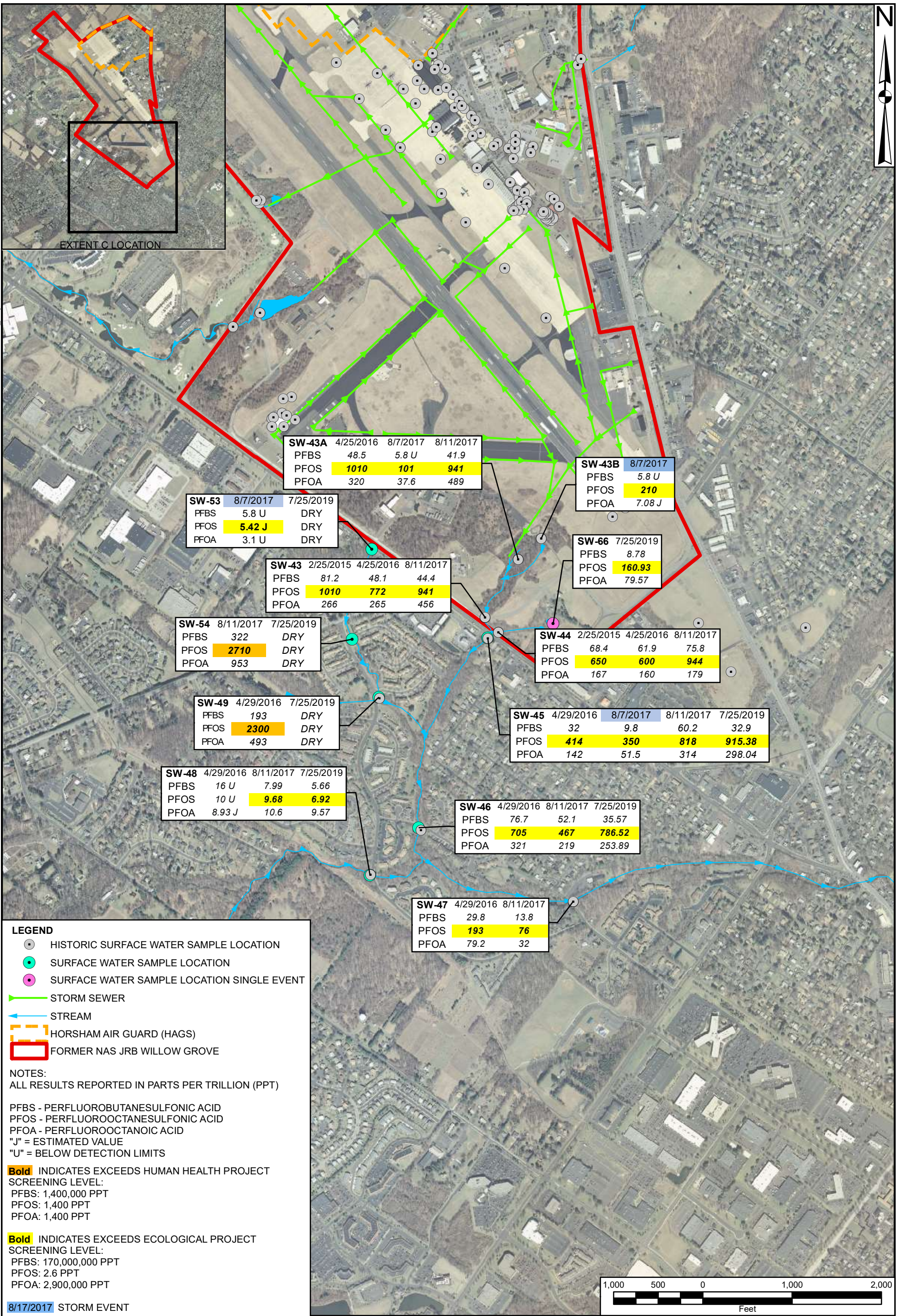
**HISTORICAL SURFACE WATER RESULTS  
EXTENT A  
FORMER NAS JRB WILLOW GROVE  
MONTGOMERY COUNTY, PENNSYLVANIA**

SCALE AS NOTED	
FILE	
WGNA PFOS TAG SW 01	
REV 0	DATE 12/04/19
FIGURE NUMBER 6	









**LEGEND**

- HISTORIC SURFACE WATER SAMPLE LOCATION
- SURFACE WATER SAMPLE LOCATION
- SURFACE WATER SAMPLE LOCATION SINGLE EVENT
- STORM SEWER
- STREAM
- HORSHAM AIR GUARD (HAGS)
- ▭ FORMER NAS JRB WILLOW GROVE

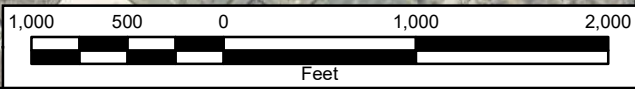
**NOTES:**  
ALL RESULTS REPORTED IN PARTS PER TRILLION (PPT)

PFBS - PERFLUOROBUTANESULFONIC ACID  
PFOS - PERFLUOROOCETANESULFONIC ACID  
PFOA - PERFLUOROOCETANOIC ACID  
"J" = ESTIMATED VALUE  
"U" = BELOW DETECTION LIMITS

**Bold** INDICATES EXCEEDS HUMAN HEALTH PROJECT SCREENING LEVEL:  
PFBS: 1,400,000 PPT  
PFOS: 1,400 PPT  
PFOA: 1,400 PPT

**Bold** INDICATES EXCEEDS ECOLOGICAL PROJECT SCREENING LEVEL:  
PFBS: 170,000,000 PPT  
PFOS: 2.6 PPT  
PFOA: 2,900,000 PPT

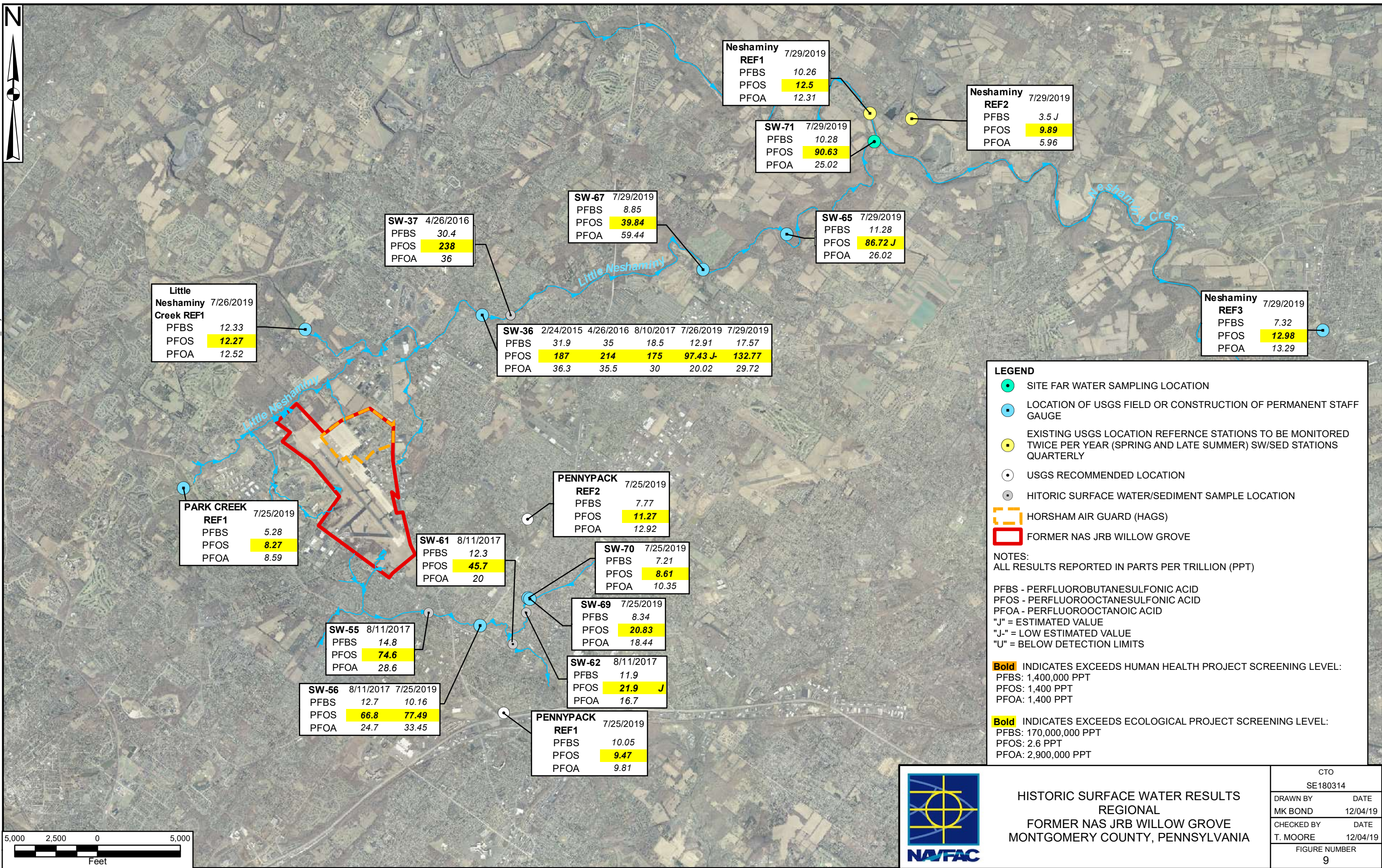
8/17/2017 STORM EVENT



HISTORICAL SURFACE WATER RESULTS  
EXTENT C  
FORMER NASJRB WILLOW GROVE  
MONTGOMERY COUNTY, PENNSYLVANIA

SCALE AS NOTED	
FILE WGNA PFOA TAG SW 03	
REV 0	DATE 12/04/19
FIGURE NUMBER 8	





**Little Neshaminy Creek REF1** 7/26/2019

PFBS	12.33
PFOS	<b>12.27</b>
PFOA	12.52

**SW-37** 4/26/2016

PFBS	30.4
PFOS	<b>238</b>
PFOA	36

**SW-67** 7/29/2019

PFBS	8.85
PFOS	<b>39.84</b>
PFOA	59.44

**Neshaminy REF1** 7/29/2019

PFBS	10.26
PFOS	<b>12.5</b>
PFOA	12.31

**SW-71** 7/29/2019

PFBS	10.28
PFOS	<b>90.63</b>
PFOA	25.02

**Neshaminy REF2** 7/29/2019

PFBS	3.5 J
PFOS	<b>9.89</b>
PFOA	5.96

**SW-65** 7/29/2019

PFBS	11.28
PFOS	<b>86.72 J</b>
PFOA	26.02

**Neshaminy REF3** 7/29/2019

PFBS	7.32
PFOS	<b>12.98</b>
PFOA	13.29

**SW-36** 2/24/2015 4/26/2016 8/10/2017 7/26/2019 7/29/2019

PFBS	31.9	35	18.5	12.91	17.57
PFOS	<b>187</b>	<b>214</b>	<b>175</b>	<b>97.43 J</b>	<b>132.77</b>
PFOA	36.3	35.5	30	20.02	29.72

**PARK CREEK REF1** 7/25/2019

PFBS	5.28
PFOS	<b>8.27</b>
PFOA	8.59

**PENNYPACK REF2** 7/25/2019

PFBS	7.77
PFOS	<b>11.27</b>
PFOA	12.92

**SW-61** 8/11/2017

PFBS	12.3
PFOS	<b>45.7</b>
PFOA	20

**SW-70** 7/25/2019

PFBS	7.21
PFOS	<b>8.61</b>
PFOA	10.35

**SW-55** 8/11/2017

PFBS	14.8
PFOS	<b>74.6</b>
PFOA	28.6

**SW-69** 7/25/2019

PFBS	8.34
PFOS	<b>20.83</b>
PFOA	18.44

**SW-56** 8/11/2017 7/25/2019

PFBS	12.7	10.16
PFOS	<b>66.8</b>	<b>77.49</b>
PFOA	24.7	33.45

**SW-62** 8/11/2017

PFBS	11.9
PFOS	<b>21.9 J</b>
PFOA	16.7

**PENNYPACK REF1** 7/25/2019

PFBS	10.05
PFOS	<b>9.47</b>
PFOA	9.81

**LEGEND**

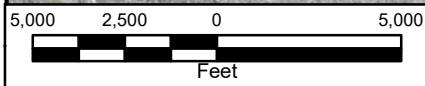
- SITE FAR WATER SAMPLING LOCATION
- LOCATION OF USGS FIELD OR CONSTRUCTION OF PERMANENT STAFF GAUGE
- EXISTING USGS LOCATION REFERENCE STATIONS TO BE MONITORED TWICE PER YEAR (SPRING AND LATE SUMMER) SW/SED STATIONS QUARTERLY
- USGS RECOMMENDED LOCATION
- HISTORIC SURFACE WATER/SEDIMENT SAMPLE LOCATION
- HORSHAM AIR GUARD (HAGS)
- FORMER NAS JRB WILLOW GROVE

**NOTES:**  
ALL RESULTS REPORTED IN PARTS PER TRILLION (PPT)

PFBS - PERFLUOROBUTANESULFONIC ACID  
PFOS - PERFLUOROOCETANESULFONIC ACID  
PFOA - PERFLUOROOCETANOIC ACID  
"J" = ESTIMATED VALUE  
"J-" = LOW ESTIMATED VALUE  
"U" = BELOW DETECTION LIMITS

**Bold** INDICATES EXCEEDS HUMAN HEALTH PROJECT SCREENING LEVEL:  
PFBS: 1,400,000 PPT  
PFOS: 1,400 PPT  
PFOA: 1,400 PPT

**Bold** INDICATES EXCEEDS ECOLOGICAL PROJECT SCREENING LEVEL:  
PFBS: 170,000,000 PPT  
PFOS: 2.6 PPT  
PFOA: 2,900,000 PPT



HISTORIC SURFACE WATER RESULTS  
REGIONAL  
FORMER NAS JRB WILLOW GROVE  
MONTGOMERY COUNTY, PENNSYLVANIA

CTO	
SE180314	
DRAWN BY	DATE
MK BOND	12/04/19
CHECKED BY	DATE
T. MOORE	12/04/19
FIGURE NUMBER	
9	